

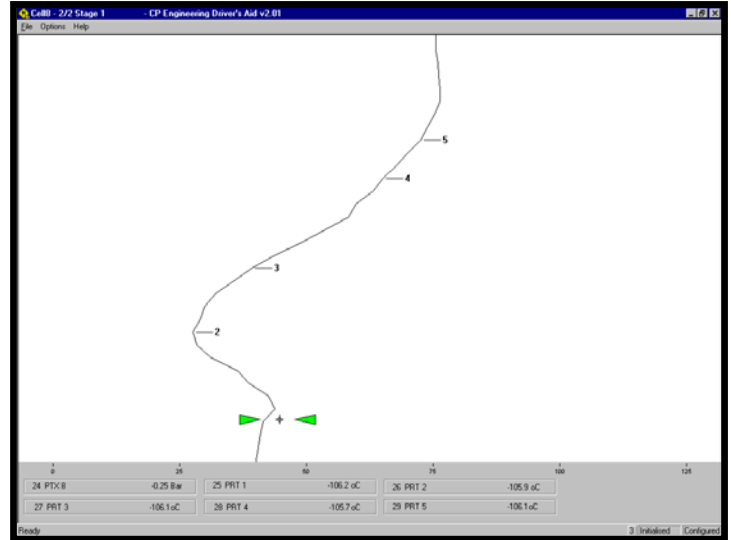
Driver's Aid Software

Introduction: The CP Engineering Driver's Aid, when installed on a chassis dynamometer, enables a pre-set program to be displayed on screen for the vehicle's driver to follow:

Description: The Driver's Aid software is configured to enable the test engineer to view tests to international standards and customer specific tests under a Microsoft Windows environment. Data is transferred via TCP/IP.

The user configurable operating screen has the following features:

- Operating Tolerance Band with colour change 'Out of Limits'. (Green=IN, Red=OUT)
- Reportable defaults with 'Out Of Limits' log (with test system interface).
- Adjustable Speed Span.
- Adjustable Pre and Post Screen Demand Curve.
- Gear Change and Gear Required displayed.
- Scroll Display of Ramp.
- Display for Test Timings.
- Display Of Up To Six Selectable Critical Input Channels. (Shown at bottom of screen)



Extent of Supply:

IBM compatible Driver's Aid PC System, which can be located in the control cabinet.

- PENTIUM III, 866 MHz MMX
- 128 Mbytes SDRAM.
- 4.3 bytes EIDE Hard disk unit.
- 3.5", 1.44 Mbytes floppy disk unit.
- SVGA Accelerated 64-Bit, ATI Expert@Work, 8 Mbytes AGP.
- 2 Serial ports and 1 parallel printer port.
- Network interface card, NE2000 PCI.
- Driver's Aid Software Code.
- Video splitter card and lead for the driver's monitor.
- Desk mounted monitor, keyboard and mouse.
- Communication Enclosure acting as a Marshalling point to interface to the hardware module's plugs, sockets and terminal block.
- Operator's pendant / flying lead with Start, Reset and Stop push buttons.
- Drivers repeat monitor.
- X-Axis and Y-Axis monitor and pendant frame to be located in the test cell.

